



Drifting or rallying? Bring 'em on!

H2 Hydraulic Handbrake User Manual

THANK YOU FOR CHOOSING CONSPIT PRODUCT
ENJOY THE TOP-TIER RACING EXPERIENCE WITH H2 HYDRAULIC HANDBRAKE

Ensu (Shanghai) Electronic Technology Co., Ltd

Contents

目录

- 01** Introduction

前言
- 02** Connecting options

连接方式
- 03** Package contents

包装清单
- 04** mounting

安装方式
- 05** mechanical adjustment

力度调节
- 06** Calibration

驱动程序
- 07** maintenance

维护及保养
- 08** Dos and don'ts

注意事项



Introduction

The H2 hydraulic handbrake is designed for sim-racing drivers who are deeply into drifting and rallying, with high-end features and powerful adjustability; We recommend that you read this manual carefully to ensure that you can correctly and quickly enjoy the full functions of the H2 hydraulic handbrake.

Downloads

Get the latest driver software and other documents from our website www.conspit.com

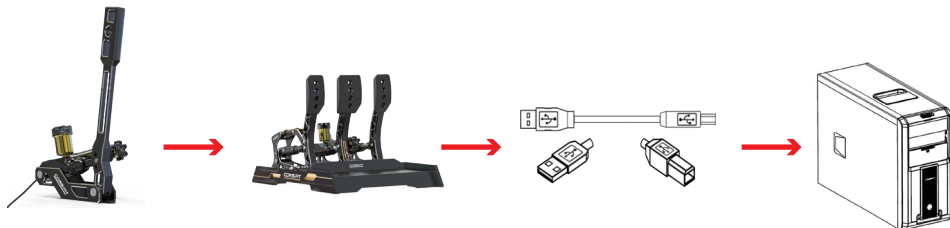
Contact us

If you have other questions about the Conspit brand and products, feel free to contact us via our email info@conspit.com

Connect your H2 Handbrake to PC or other devices

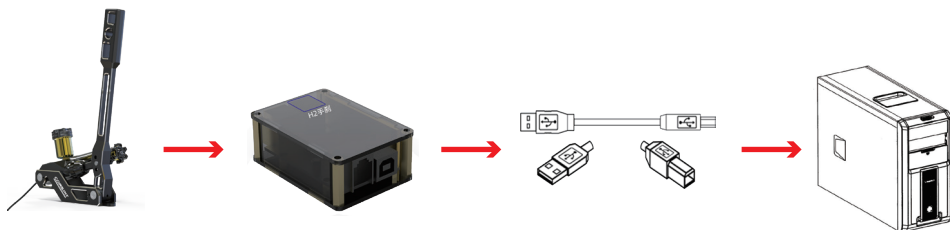
1. Connect to CONSPIT CGP/CPP pedal

H2—Conspit pedal—USB—PC



2. Connect to H2 Handbrake Control Box

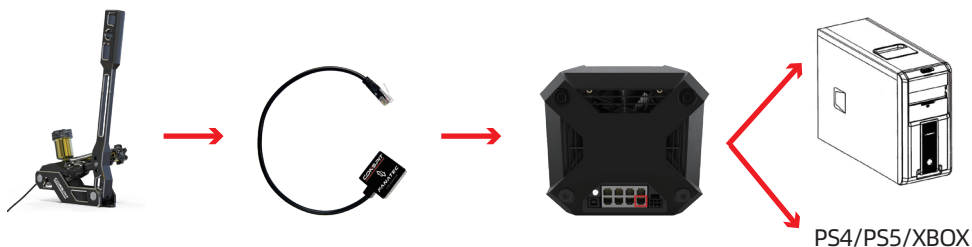
H2—Control Box—USB—PC



3. Connect to Fanatec wheel base

H2—CONSPIT USB Adaptor—Fanatec wheel base

PC
PS4/PS5/XBOX (需要Fanatec本体支持)



*Make sure to connect to "Handbrake" port of FANATEC base



(a)

H2 handbrake



(b)

CONSPIT stickers



(c)

CONSPIT adaptor



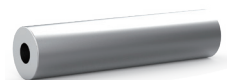
(d)

fasteners

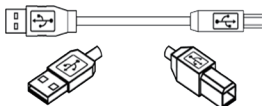


(e)

extension stud



(f)

angle switching
extension rod

(g)

USB cable



(h)

Control box (optional)

Mount and set up H2 handbrake according to your simulator rig

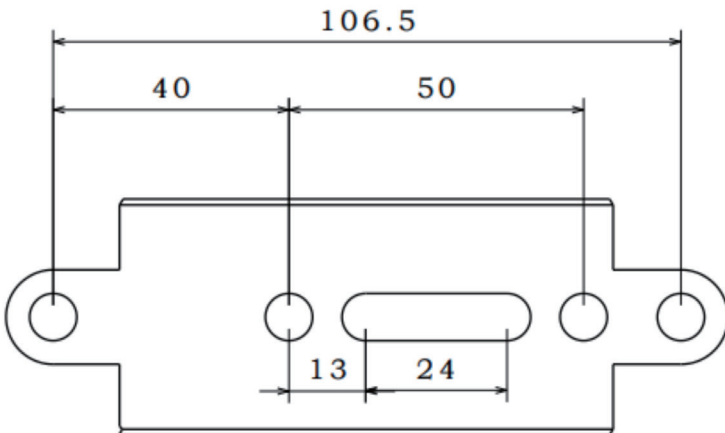
● Assembling materials

Fasteners like bolts and nuts are already included with the package for installation. Please note that our mounting dimension may not cover all possible installation situations, so you may need to use other fasteners or mount it according to the actual situation.

Mount your H2 Handbrake to the rig

Mount H2 Handbrake to the rig through the holes and long slot at the bottom. You can first pull out the pin between the connecting rod and the handbrake rod for convenience.

* Please make sure to use at least two bolts at the bottom to mount the handbrake, we recommend using the two holes at the two ends of the plate for mounting which is the solidest way=, you can also use the long slot in the middle to flexibly fit your rig.



● Determine the overall position of the handbrake

1. Please first determine whether you want to place the handbrake bottom mounting surface vertically or horizontally according to your preference.
2. The handbrake lever can be placed vertically/horizontally relative to the bottom mounting surface.



Handbrake lever vertical/horizontal placement

The factory setting (the figure on the left) is that the handbrake lever is placed vertically. When the handbrake lever needs to be placed horizontally, pull-out the pin between the handbrake lever and the connecting rod, and install the angle switching extension rod on the brake cylinder and the connection through the stud, then plug the pin to set the lever horizontal (the figure on the right).



Adjust the handbrake force according to your preference.

- **Pin position**

Pull out the pin on the handbrake lever to quickly switch the handbrake force. According to the pin position, the handbrake force can be adjusted to 3 quick-adjusting set-ups, corresponding to different force curves.

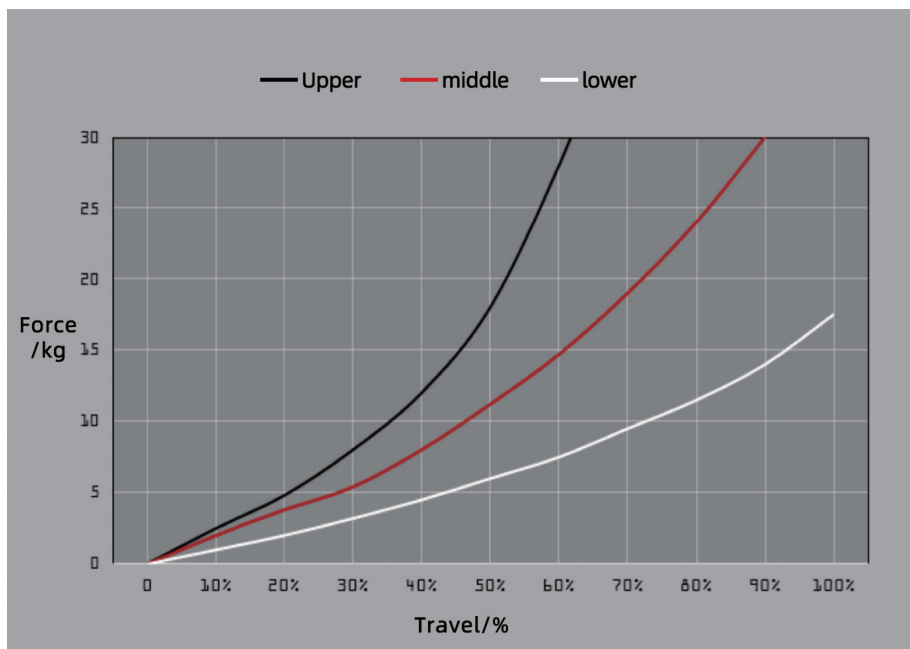


Recommended pin-position

According to the grip conditions and common application scenarios, we recommend you adjust the pin-position according to the following situations:

1. The middle position is recommended for conditions with nice surface and grip (e.g. asphalt road and race tracks when it is dry).
2. The upper position is recommended for situations with poor grip (e.g. any road surfaces in the rain, dirt roads)
3. The lower position is recommended when it is necessary to lock the rear wheel frequently and drastically (e.g. drifting on a track with many corners), with this set-up you can easily and quickly lock up the rear wheel at any time.

force-travel curves of pin positions



Hydraulic system pre-load adjustment

In addition to the quick adjustment achieved by changing the pin position, you can also use the included adjustment spanner to adjust the hydraulic preload to fine-tune the handbrake force.

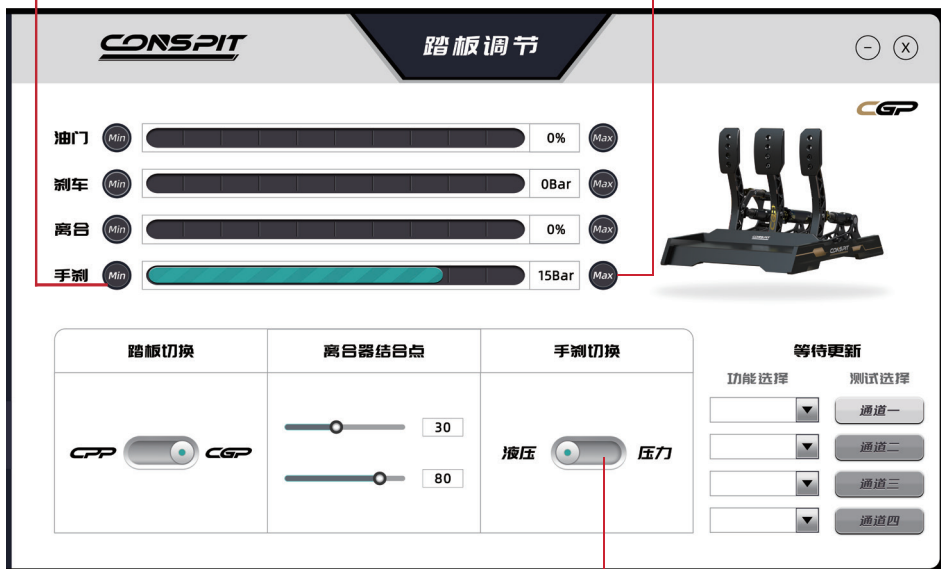
1. Turning the preload adjustment ring clockwise will increase the handbrake force and shorten the handbrake travel
2. Turning the preload adjustment ring counterclockwise will reduce the handbrake force and increase the handbrake travel



Get the latest driver software and other documents from our website
www.conspit.com

Pull the handbrake to your ideal maximum travel, then click Max

Fully release the handbrake, then click Min



switch to hydraulic

- Please try to keep the handbrake clean. Using it in the case of serious dust accumulation may cause damage to the product.
- Please clean the handbrake cylinder connecting rod regularly, and properly apply the grease to the shaft

* The hydraulic system of the H2 hydraulic handbrake is maintenance-free type. Please do not perform the following operations:

- Turn the oil container
- Turn the oil container cover
- Any operation related to hydraulic oil

The product is all metal structure and has sharp edges, which may cause injury. Children under the age of 12 should use this product under supervision.

* Get support from Consplit in case of oil leakage, damage, etc., please do not handle it yourself.